



TZ SERIES COLUMN SPEAKER SYSTEM



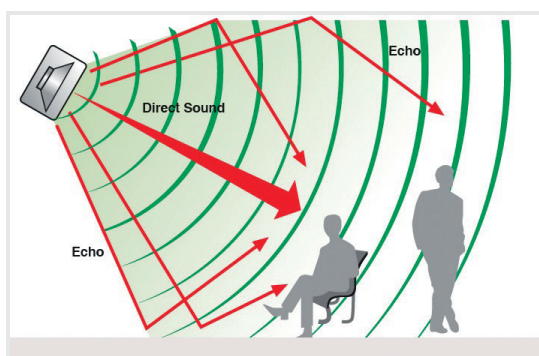
**Delivering focused sound directivity
with high performance speaker units
arranged in a vertical array.**

Focused sound directivity for improved intelligibility

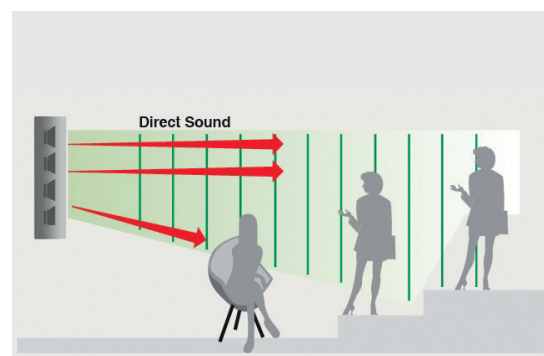
The highly efficient TZ Series Column Speakers are compact speakers that deliver excellent sound performance in medium sized venues such as houses of worship, gymnasiums, auditoriums and more.

Multiple speaker units are arranged in a vertical array to produce a wide horizontal sound dispersion, yet at the same time, limit the vertical sound dispersion. This greatly minimizes reverberation problem in enclosed areas.

Newly added to the TZ Series Column Speaker System is the weatherproof range that has attained a rating of IP-65. They are capable of withstanding weather conditions in outdoor installations.



Standard Speaker



Column Speaker

Focused sound directivity

With speaker units arranged vertically in the column speakers, horizontal dispersion angle is increased to cover a wider area. At the same time, vertical sound dispersion is limited and the reflection of sound on the ceiling and ground is reduced, as illustrated in the above diagram. When the TZ Series Column Speakers are utilized, reverberation problem in enclosed areas can be minimized.



TZ-206B/
TZ-206BWP TZ-206W/
TZ-206WWP



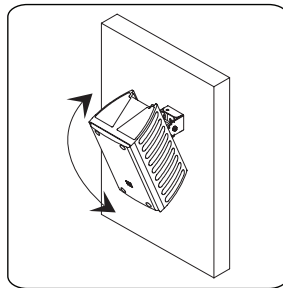
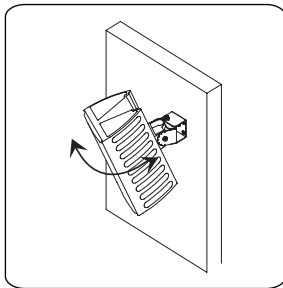
TZ-406B/
TZ-406BWP TZ-406W/
TZ-406WWP



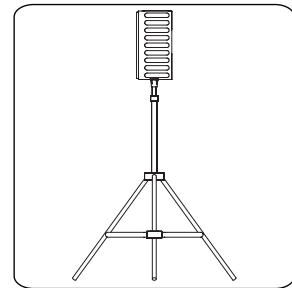
TZ-606B/
TZ-606BWP TZ-606W/
TZ-606WWP

Flexibility in installation

Accessory brackets allow installed speakers to be turned freely, making it easy to fine tune an ideal sound field. The speaker can also be mounted on an optional speaker stand.



Accessory brackets allow installed speaker to be turned horizontally and vertically.



Mounting on optional speaker stand, ST-16A

For outdoor environment

The weatherproof range has an IP rating of IP-65, which allows the speakers to be installed in outdoor venues. With an extra filter net, dust and water is prevented from damaging the speaker components. Even if water enters the net, the plastic speaker cones are waterproof. On the rear, a terminal cover protects the cables from being damaged by water.



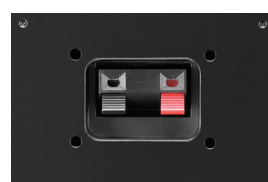
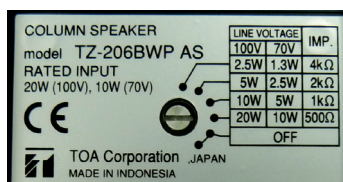
Plastic speaker cone



Terminal cover

Impedance matching

For optimal amplifier/speaker performance, a conveniently located rotary switch at the rear of the speaker panel allows various wattage settings to be easily made.



Easy connection

Push-in terminals allow connections to be made easily and quickly.

SPECIFICATION

Model No.	TZ-206B AS	TZ-206W AS	TZ-206BWP AS	TZ-206WWP AS
Enclosure	Sealed type			
Rated Input	20W			
Rated Impedance	100V line: 500Ω (20W), 1kΩ(10W), 2kΩ (5W), 4kΩ (2.5W) 70V line: 500Ω (10W), 1kΩ (5W), 2kΩ (2.5W), 4kΩ (1.3W)			
Sensitivity	90dB (1W,1m)		89dB (1W,1m)	
Frequency Response	150 - 16,000Hz		150 - 13,000Hz	
Speaker Component	10cm cone-type x 2		10cm cone-type x 2, waterproof	
Input Terminal	Push-in terminal			
Operating Temperature	-10 °C to + 50 °C			
Finish	Enclosure: HIPS, black with paint/white Punched Net: Surface-tread steel plate, black/white paint Speaker Bracket: Aluminum die-cast, black/white paint Joint/wall Bracket: Steel plate, t1.6, black/white, paint		Enclosure: HIPS, black with paint/white Punched Net: Surface-tread steel plate, black/white anti-rust paint Speaker Bracket: Aluminum die-cast, black paint Joint/wall Bracket: Steel plate, t1.6, black, paint (ED coating)	
IP Code	-		IP-65	
Dimensions	135 (W) x 250 (H) x 128 (D) mm			
Weight	1.9kg			
Accessory	Speaker bracket (1pc), Joint bracket (1pc), Wall bracket (1pc), Fixing bolt M5 x 60 (1pc), Hexagon bolt M6 x 12 (with plain washer and spring washer) (2pcs), Machine screw M5 x 20 (with plain washer and spring washer) (2pcs), Hexagon bolt M8 x 15 (1pc)		Speaker bracket (1pc), Joint bracket (1pc), Wall bracket (1pc), Fixing bolt M5 x 60 (1pc), Hexagon bolt M6 x 12 (with plain washer and spring washer) (2pcs), Machine screw M5 x 20 (with plain washer and spring washer) (2pcs), Hexagon bolt M8 x 15 (1pc), Terminal cover (1pc), Tapping screw (4pcs)	
Option	Speaker Stand: ST-16A			

Model No.	TZ-406B AS	TZ-406W AS	TZ-406BWP AS	TZ-406WWP AS
Enclosure	Sealed type			
Rated Input	40W			
Rated Impedance	100V line: 250Ω (40W), 500Ω (20W), 1kΩ (10W), 2kΩ (5W) 70V line: 250Ω (20W), 500Ω (10W), 1kΩ (5W), 2kΩ (2.5W)			
Sensitivity	93dB (1W,1m)		92dB (1W,1m)	
Frequency Response	150 - 16,000Hz		150 - 13,000Hz	
Speaker Component	10cm cone-type x 4		10cm cone-type x 4, waterproof	
Input Terminal	Push-in terminal			
Operating Temperature	-10 °C to + 50 °C			
Finish	Enclosure: HIPS, black with paint/white Punched Net: Surface-tread steel plate, black/white paint Speaker Bracket: Aluminum die-cast, black/white paint Joint/wall Bracket: Steel plate, t1.6, black/white, paint		Enclosure: HIPS, black with paint/white Punched Net: Surface-tread steel plate, black/white anti-rust paint Speaker Bracket: Aluminum die-cast, black paint Joint/wall Bracket: Steel plate, t1.6, black, paint (ED coating)	
IP Code	-		IP-65	
Dimensions	135 (W) x 498 (H) x 128 (D) mm			
Weight	3.5kg			
Accessory	Speaker bracket (1pc), Joint bracket (1pc), Wall bracket (1pc), Fixing bolt M5 x 60 (1pc), Hexagon bolt M6 x 12 (with plain washer and spring washer) (2pcs), Machine screw M5 x 20 (with plain washer and spring washer) (2pcs), Hexagon bolt M8 x 15 (1pc)		Speaker bracket (1pc), Joint bracket (1pc), Wall bracket (1pc), Fixing bolt M5 x 60 (1pc), Hexagon bolt M6 x 12 (with plain washer and spring washer) (2pcs), Machine screw M5 x 20 (with plain washer and spring washer) (2pcs), Hexagon bolt M8 x 15 (1pc), Terminal cover (1pc), Tapping screw (4pcs)	
Option	Speaker Stand: ST-16A			

Model No.	TZ-606B AS	TZ-606W AS	TZ-606BWP AS	TZ-606WWP AS
Enclosure	Sealed type			
Rated Input	60W			
Rated Impedance	100V line: 170Ω (60W), 330Ω (30W), 670Ω (15W), 1.3kΩ (7.5W) 70V line: 170Ω (30W), 330Ω (15W), 670Ω (7.5W), 1.3kΩ (3.8W)			
Sensitivity	95dB (1W,1m)		94dB (1W,1m)	
Frequency Response	150 - 16,000Hz		150 - 13,000Hz	
Speaker Component	10cm cone-type x 6		10cm cone-type x 6, waterproof	
Input Terminal	Push-in terminal			
Operating Temperature	-10 °C to + 50 °C			
Finish	Enclosure: HIPS, black with paint/white Punched Net: Surface-tread steel plate, black/white paint Speaker Bracket: Aluminum die-cast, black/white paint Joint/wall Bracket: Steel plate, t1.6, black/white, paint		Enclosure: HIPS, black with paint/white Punched Net: Surface-tread steel plate, black/white anti-rust paint Speaker Bracket: Aluminum die-cast, black paint Joint/wall Bracket: Steel plate, t1.6, black, paint (ED coating)	
IP Code	-		IP-65	
Dimensions	135 (W) x 746 (H) x 128 (D) mm			
Weight	5.5kg			
Accessory	Speaker bracket (1pc), Joint bracket (1pc), Wall bracket (1pc), Fixing bolt M5 x 60 (1pc), Hexagon bolt M6 x 12 (with plain washer and spring washer) (2pcs), Machine screw M5 x 20 (with plain washer and spring washer) (2pcs), Hexagon bolt M8 x 15 (1pc)		Speaker bracket (1pc), Joint bracket (1pc), Wall bracket (1pc), Fixing bolt M5 x 60 (1pc), Hexagon bolt M6 x 12 (with plain washer and spring washer) (2pcs), Machine screw M5 x 20 (with plain washer and spring washer) (2pcs), Hexagon bolt M8 x 15 (1pc), Terminal cover (1pc), Tapping screw (4pcs)	
Option	Speaker Stand: ST-16A			

Note: Bolt and nuts for mounting bracket to the wall are not included



Human Society with
Sound & Communication

TOA Electronics Europe GmbH
www.toa.eu

Errors excepted - technical data may change without prior notice.
Printed in Germany (1309) 8650711018